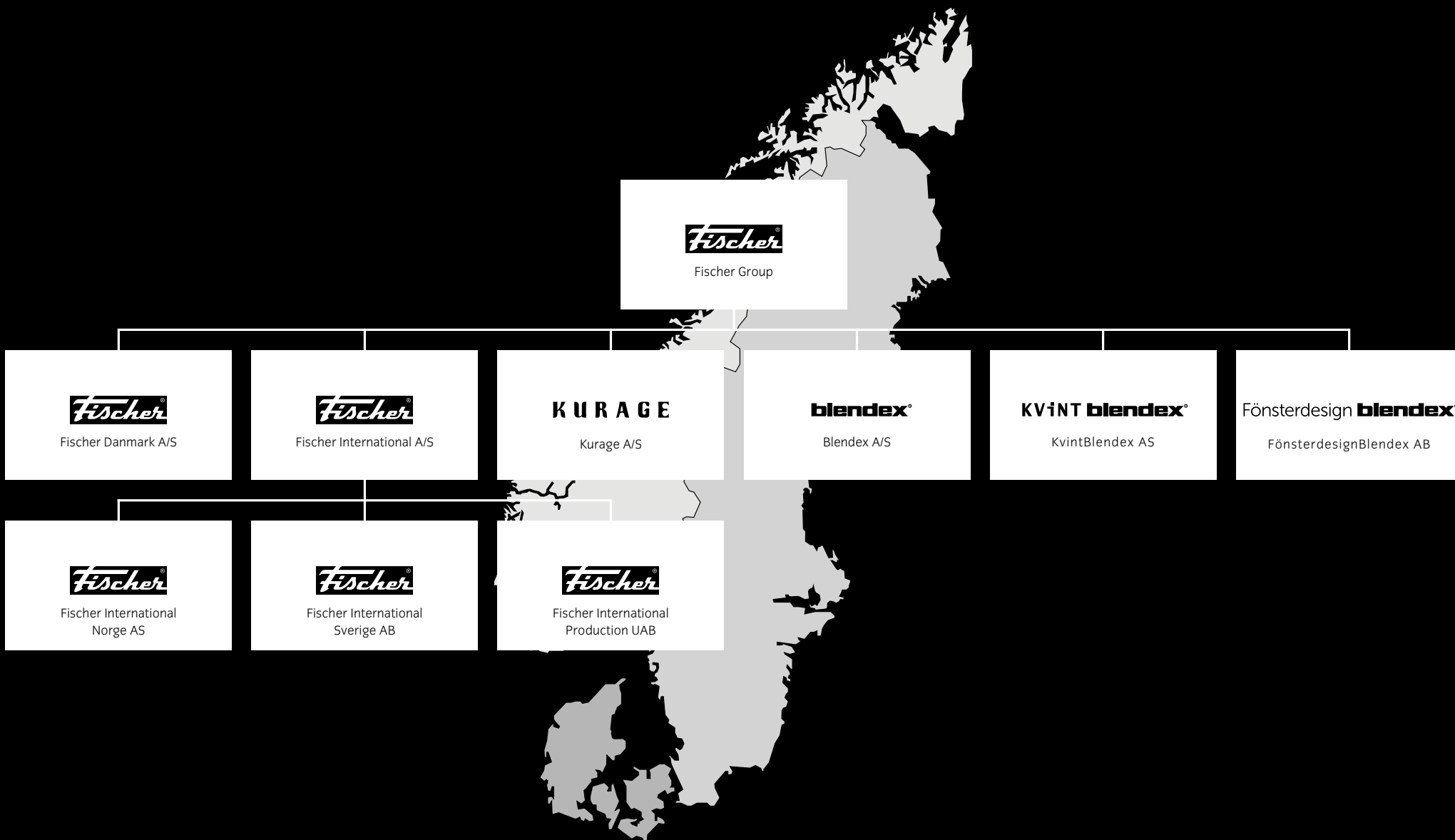




F I S C H E R G R O U P



- A family business since 1962
- 260 employees
- Production of solar shading and manufacturing of textiles



SELECTED REFERENCES

DOKK1, Denmark

400 roller blinds in special dimensions, 300 m of screen curtains, 1,400 m of blackout curtains, 1,800 m² of roof light screening, 60 acoustic screens, control solutions

Axel Towers, Denmark

5,000 metres of curtain with aluminium coating on the outer side and 2.500 metres of curtain rail

Arla Innovation Centre, Denmark

40 zipper screens, 60 motorised blinds, 125 manual blinds, 3 curtains

Bestseller, Denmark

1,300 interior roller blinds in special fabric, LON relays and specially developed control box

Malmö Högskola (Malmö University), Sweden

2,700 metres of textiles for curtains

Campuskollegiet (Campus college), Denmark

1,000 roller blinds, blackout curtains, curtains for lounge areas and 10 exterior screens

Via Campus, Denmark

153 zipper screens, 1,400 roller blinds, blackout curtains, curtains for interior glass sections, KNX control for integration with CTS

Kokkedal Slot (Kokkedal Castle), Denmark

800 metres of curtains, 30 bed dresses, and 72 pillows

Musikkens Hus (House of Music), Denmark

4 metres high acoustic curtains in thick woollen felt for 69 practise rooms. 5 km of fabric in total

Zero Energy House Grøndalsvej, Denmark

955 built-in, motorised screens

The four court buildings (Holbæk, Holstebro, Herning og Kolding), Denmark

608 zipper screens

SEB Bank, Denmark

650 motorised curtain rails featuring sun-screening fabric with alu-coated back

Crowne Plaza Copenhagen, Denmark

Curtains, blackout curtains, pillows, bedspreads for 366 rooms

Carlsberg Byen (Carlsberg City), Denmark

920 built-in screens

Copenhagen International School, Denmark

670 interior screens and 500 blackout systems

Mærks Drilling & Supply, Denmark

370 zipper screens, 50 skylight screens, KNX control

Kirkebjerg Skole (Kirkebjerg School), Denmark

216 screens with automatics

Trafiktårn Vest (Traffic Tower West), Denmark

186 interior roller blinds, 42 exterior venetian blinds as well as control

Falck-Center CPH, Denmark

400 interior venetian blinds

SELECTED REFERENCES

Nordbro Kollegium, Denmark

More than 3.5 km of curtain and 600 roller blinds for all apartments in the college

Rambøll HQ, Denmark

400 screens, 400 roller blinds and sun shading control sunsync™ 200

GUESTapart/aarhus, Denmark

2,000 meters of velour and 1,000 meters of sun curtain

Nordea HQ, Denmark

1.400 interior screens and automatics

citizenM, Denmark

Interior sun shading and black out for 365 rooms

LEGO House, Denmark

Sun shading in audience areas and acoustic curtains

Kalvebod Fælled School, Denmark

11 meter high acoustic curtains made of 1,000 meters of textile and 7 meters high blackout curtains.

Finansinspektionen (Swedish Financial Supervisory Authority), Sweden

Acoustic Design Solutions: 200 specially made acoustic panels, 200 metres of curtain

Malmö Arena Hotel, Sweden

3,000 metres of fabric for curtains, bed runners, and blackout curtains

Psykiatrihuset (House of Psychiatry), Sweden

4,000 metres of curtain, 40 acoustics panels

Länsförsäkringar Skåne (Bank and insurance company), Sweden

Acoustic Design Solutions: 480 table screens (front and side screens), System 50. The screens are equipped with white lists and an integrated toolbar

Sigma – IT Company, Sweden

Acoustic Design Solutions: 400 table screens with an integrated toolbar

Bergen Helsehus (Bergen House of Health Care), Norway

750 metres of textiles for curtains, 34 vertical blinds, 86 roller blinds, and 75 venetian blinds

DEG 42, The Opera Quarter, Norway

152 zip screens, incl. automatic control and 9 interior screens incl. automatic control

Bergheim bo- og aktivitetssenter (Home/center for elderly people) Norway

Interior sun shading and curtains for the whole center and 96 apartments

Nordlandssykehuset (Hospital), Norway

Interior sun shading and curtains for a new building of the hospital

Kirkenes sykehus (Hospital), Norway

Interior sun shading and curtains for the whole hospital

Bellevue Brygge – Private housing, Norway

600 screens and automatics

Vestli skole (Vestli school), Norway

350 screens and automatics

PRODUCTS

INTERIOR:

BLACKOUT

PLEATED BLIND

ROLLER BLIND

VENETIAN BLIND

VERTICAL BLIND

ROOFLIGHT SYSTEM



EXTERIOR:

AWNING

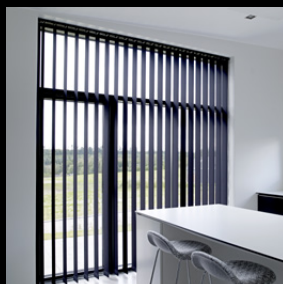
DROPPARM AWNING

LOUVRES

SCREEN

SHUTTER

VENETIAN BLIND



DOKK1, Aarhus, Denmark – Great challenges solved in flexible co-operation

Products: 400 roller blinds in special dimensions, 300 m of screen curtains, 1,400 m of blackout curtains, 1,800 m² of skylight screening, 60 acoustic screens, control solutions.

Because of the scale of the building, dimensions of roller blinds as well as of screen curtains are way over standard. The largest of the in total 400 roller blinds measures 4.5 x 6.5 metres, and some of the screen curtains reach up to a height of 6 metres.



Malmö Arena Hotel, Sweden – Curtains as an active element in the interior design

Products: Curtains, bedspreads, and blackout. All included 3,000 metres of fabric for rooms and conference hall.

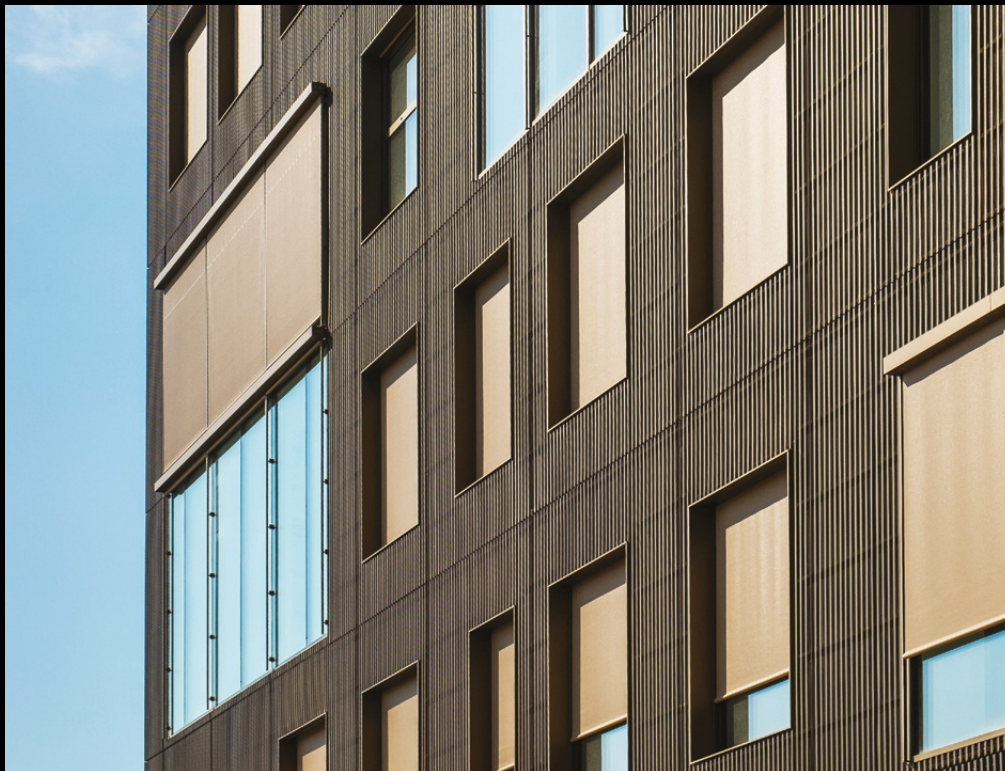
The hotel rooms are simply and succinctly decorated with only necessary furniture. In stead of creating personality using various works of art the hotel decided to use the curtains as an active element of the interior design.



Carlsberg Byen (Carlsberg City), Copenhagen, Denmark – Efficient and cheap process

Products: 920 built-in screens. 17 skylight screens.

Carlsberg Byen - Carlsberg City District - is a new city district including private homes, shops, offices, commercial buildings, and educational institutions. We supplied sun screens for three buildings: Warehouse, Karréen, and Nordfløjen. To further a both cheaper and more efficient process, 840 screens were built into the facade elements already at the factory, while 80 screens were fitted in the traditional way on-site.



DEG 42, Oslo, Norway – Integrated sun shading supports the entirety

Products: 152 zipper screens, 9 interior screens and automatic control.

To ensure an architectural whole, the sun shading at DEG 42 was planned in co-operation with the architect, both with regard to installation and the choice of colours. The cover boxes for screens are integrated behind the bricks of the building, which adds to the simplicity expressed by the facade. Lacquered side rails were installed in the brick opening, and the screens are thus barely visible. The inner screens were concealed behind the ceiling sheets, and only the cloth is visible from the inside. The systems are integrated in the roof construction.



Axel Towers, Copenhagen, Denmark – A differentiated solution

Products: 5,000 metres of curtain with aluminium coating on the outer side and 2,500 metres of curtain rail.

The solution chosen is a Fischer textile featuring technical properties in relation to light and heating. The curtains are covered with aluminium on the outer side, so that they reflect the sun radiation. The textile is so transparent that the employees maintain a good vision, and at the same time it prevents glare in the computer screens.



Copenhagen International School, Denmark – The sun shading does not disrupt the architecture

Products: 670 units of Roller Plus interior screens, 500 units of blackouts and control.

Copenhagen International School is situated in the middle of the port, and hence it was an important parameter to be able to screen the strong sunlight, which is reflected by the water. Built-in blinds were chosen, since the architect wanted to achieve a clean, geometrical expression without disturbing elements, both on the facade and in the individual rooms. Further, blinds and blackouts are fitted in the same cover case.



Rambøll Esbjerg, Denmark – The full package: exterior and interior sun shading together with user-optimised sun shading control.

Products: 400 zipper screens, 423 interior screens and sun shading control sunsync™ 200.

The architects wanted a fully integrated design that could give an overall impression of the facades. When the sun shading is down, it blends in with the facade and when it is up, it is not visible at all. In Esbjerg it is very windy, therefore wind stable zipper screens have been chosen as sun shading.

The exterior sunshading is combined with interior screens, which partly prevent glare in screens and can be used on days when the wind becomes too strong.

Fischer's sun shading control, sunsync™ 200, is an accessible and intelligent system that is easy to deal with in day-to-day operations. Sunsync™ communicates with and is connected to the building's CTS system, so you only have to operate and control one technical system.



Kalvebod Fælled School, Denmark – Acoustic curtains in large scale give softness to the hard materials.

Products: 11 meter high acoustic curtains made of 1,000 meters of textile and 7 meters high blackout curtains.

A large sports hall forms the center of the school. The hall is bordered by floor-to-ceiling windows and acoustic curtains are mounted on the large glass sections. The curtains give a softness to the hard materials, concrete and steel, and to the large rooms, both inside and outside the hall. The 1,000 meter fabric is of special woven quality, white semi-transparent and acoustically damping both in the hall and in the surrounding atrias.



Fischer Danmark A/S · Holmstrupgårdvej 4 · 8220 Brabrand · Denmark · +45 70154055

Fischer International A/S · Holmstrupgårdvej 4 · 8220 Brabrand · Denmark · +45 70154055

Kurage A/S · Holmstrupgårdvej 4 · 8220 Brabrand · Denmark · +45 86550700

Blendex A/S · Grusbakken 1-3 · 2820 Gentofte · Denmark · +45 44480956

KvintBlendex AS · Brynsalléen 4 · 0667 Oslo · Norway · +47 23005150

FönsterdesignBlendex AB · Wollmar Yxkullsgatan 15C · 118 50 Stockholm · Sweden · +46 08-6681420

Fischer International Production UAB · Siūly g. 1 · 45202 Kaunas · Lithuania · +370 37361717